



ENGLISH

**FCC Compliance Statement**

This equipment has been tested and found to comply with the limits for a Class B digital device, pursuant to Part 15 of the FCC Rules. These limits are designed to provide reasonable protection against harmful interference in a residential installation. This equipment generates, uses, and can radiate radio frequency energy and, if not installed and used in accordance with the instructions, may cause harmful interference to radio communications. However, there is no guarantee that interference will not occur in a particular installation. If this equipment does cause harmful interference to radio or television reception, which can be determined by turning the equipment off and on, the user is encouraged to try to correct the interference by one or more of the following measures:

- Reorient or relocate the receiving antenna.
- Increase the separation between the equipment and the receiver.
- Connect the equipment to an outlet on a circuit different from that to which the receiver is connected.
- Consult the dealer or an experienced radio/TV technician for help.

This device complies with part 15 of the FCC Rules. Operation is subject to the following two conditions:

- (1) this device may not cause harmful interference and
  - (2) this device must accept any interference received, including interference that may cause undesired operation.
- Any changes or modifications in construction of this device which are not expressly approved by the party responsible for compliance could void the user's authority to operate the equipment

**FCC RF Radiation Exposure Statement:** This equipment complies with FCC radiation exposure limits set forth for an uncontrolled environment. This transmitter must not be co-located or operating in conjunction with any other antenna or transmitter.

This equipment should be installed and operated with minimum distance 20 cm (7.8 inches) between the antenna and your body. Users must follow the specific operating instructions for satisfying RF exposure compliance.

**FCC Radio Frequency Interference Requirements:**

High power radars are allocated as primary users of the 5.25 to 5.35 GHz and 5.65 to 5.85 GHz bands. These radar stations can cause interference with and/or damage this device. This device cannot be co-located with any other transmitter.

**Responsible Party:**

LG Electronics USA, Inc.  
1000 Sylvan Avenue  
Englewood Cliffs, NJ 07632  
Tel: 1-800-243-0000



.....

.....

.....

.....

.....

.....

.....

.....

.....

.....

.....

.....

.....

.....

.....

.....

.....

.....

.....

.....



LG Customer Information Center	
1-800-243-0000	USA, Consumer
1-888-865-3026	USA, Commercial
Register your product Online!	
www.lg.com	

# SIMPLE MANUAL Wireless Sound Bar

Please read this manual carefully before operating your set and retain it for future reference.  
To view the instructions of advanced features, visit <http://www.lg.com> and then download Owner's Manual. Some of the content in this manual may differ from your unit.

MODELS  
SJ4R LASC58R

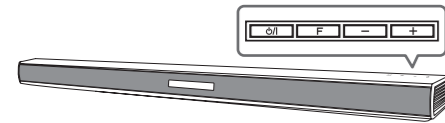


www.lg.com  
Copyright © 2018 LG Electronics Inc. All Rights Reserved.



## Front Panel

The buttons are located on the rear.

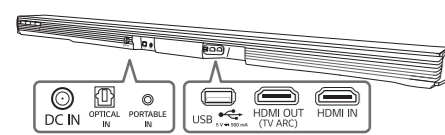


**Standby / On**

**F** Selects Function

**- +** Adjusts Volume

## Rear Panel



**DC IN** Connect to the AC adapter

**OPTICAL IN** Connect to an Optical device

**PORTABLE IN** Connect to a Portable device

**USB** Connect to a USB device

**HDMI OUT (TV ARC)** Connect to a TV

**HDMI IN** Connect to HDMI out on a device

## 1 Subwoofer Connection

Place the wireless subwoofer near the speaker and follow steps below.

- 1 Connect the power cord of wireless subwoofer and sound bar to the outlet.

- 2 Turn on the main unit.

The sound bar and wireless subwoofer will be **automatically** connected. The subwoofer's green LED turns on.

### Subwoofer Connection Manually

If the subwoofer does not make sound, try to connect manually.

- 1 Press **Pairing** button on the rear of the wireless subwoofer.

- The green LED on the rear of wireless subwoofer blinks quickly.

- 2 Turn on the main unit.

- 3 Pairing is completed.

- The green LED on the rear of wireless subwoofer turns on.

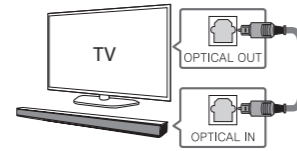
**!** Keep the sound bar and the subwoofer away from certain devices (ex. wireless router, microwave oven, etc.) over 1m (3.28 ft) to prevent wireless interference.

## 2 TV Connection

Connect with the Sound Bar and TV using Optical (A) or HDMI ARC (B).

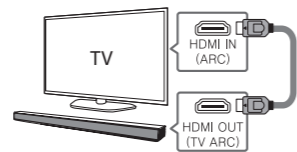
### A Optical Connection

- 1 Connect the sound bar to the TV using Optical cable.
- 2 Set up [External Speaker (Optical)] on your TV setting menu.



### B HDMI(ARC) Connection

- 1 Connect the sound bar to the TV using HDMI cable.
- 2 Set up [External Speaker (HDMI ARC)] on your TV setting menu.

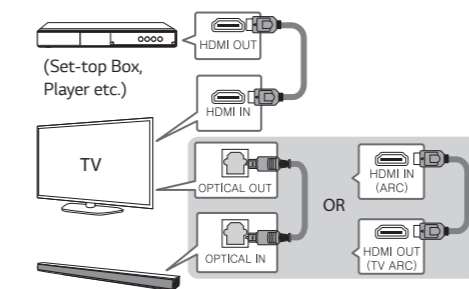


**!**

- HDMI connection is unavailable if your TV does not support HDMI ARC.
- If this unit is connected by OPTICAL and ARC at the same time, the ARC signal has a higher priority.

### Additional Device Connection

- 1 Connect to the external device as follows.



- 2 Set the input source by pressing **F** on the remote control or unit repeatedly.

## Remote control



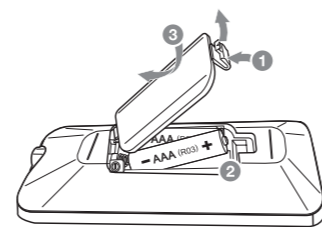
**ASC/BASS BLAST/CINEMA:** Selects the sound effect.

**REAR LEVEL +/-:** Adjusts the volume level of rear speakers. (For rear speakers)

**WOOFER LEVEL +/-:** Adjusts the volume level of subwoofer.

**AUTO POWER ON/OFF:** Automatically turns on by an input source.

### Battery Replacement



## Additional Information

### Specification

Power consumption	Refer to the main label.
AC adapter	<ul style="list-style-type: none"> <li>Model : DA-38A25</li> <li>Manufacturer : Asian Power Devices Inc.</li> <li>Input : 100 - 240 V ~ 50 - 60 Hz 1.2 A</li> <li>Output : 25 V 1.52 A</li> </ul>
Dimensions (W x H x D)	Approx. 890 mm x 55 mm x 85 mm (35 inch x 2.17 inch x 3.35 inch) With foot
Bus Power Supply (USB)	5 V 500 mA
Amplifier (Total RMS Output power)	420 W RMS

Design and specifications are subject to change without notice.

**!**

### Rear Surround sound

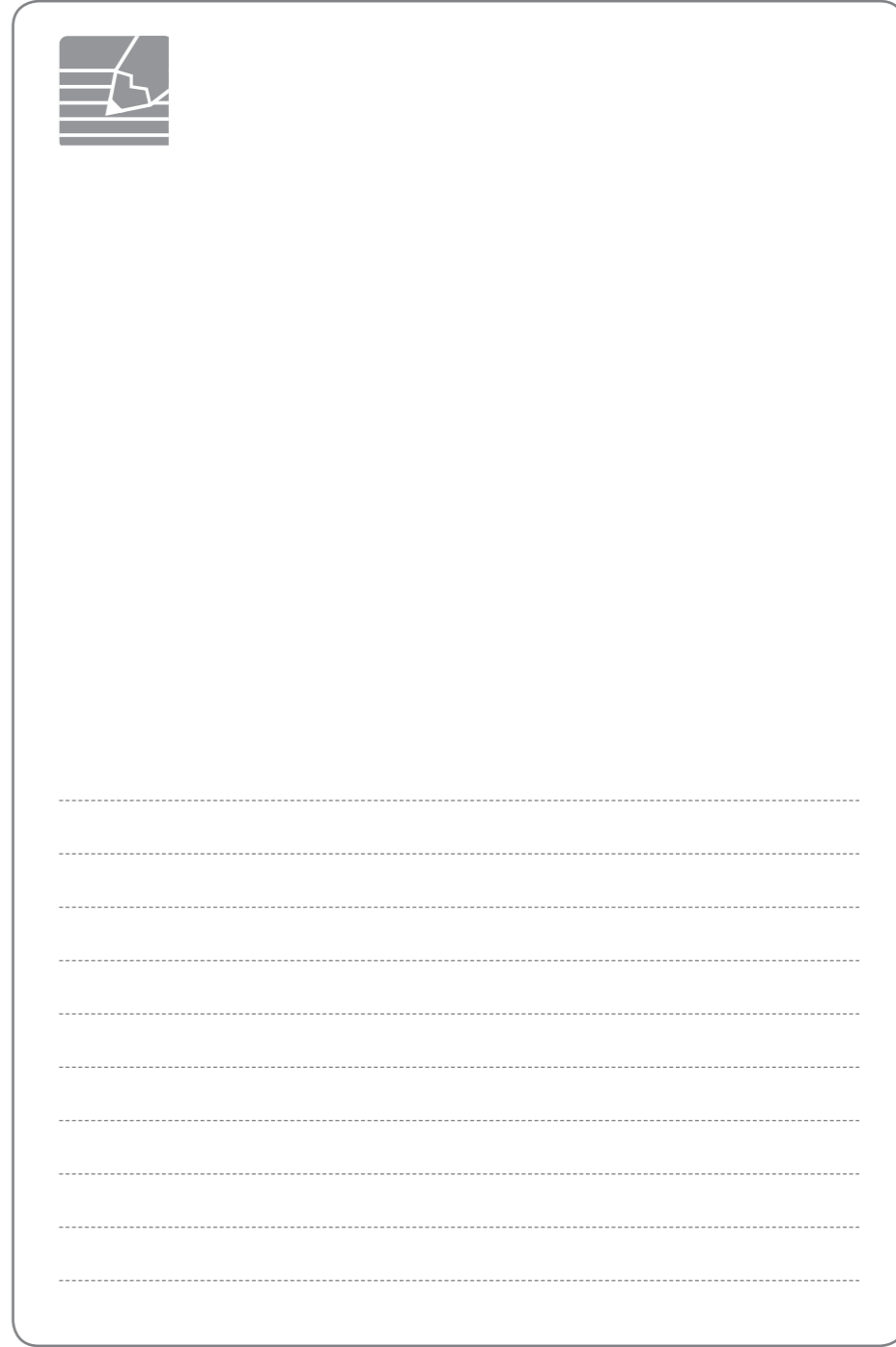
Wireless Rear Speakers Kit included for real surround sound.(SPJ4-S)

## OPEN SOURCE SOFTWARE NOTICE INFORMATION

To obtain the source code under GPL, LGPL, MPL, and other open source licenses, that is contained in this product, please visit <http://opensource.lge.com>.

In addition to the source code, all referred license terms, warranty disclaimers and copyright notices are available for download.

LG Electronics will also provide open source code to you on CD-ROM for a charge covering the cost of performing such distribution (such as the cost of media, shipping and handling) upon email request to [opensource@lge.com](mailto:opensource@lge.com). This offer is valid for a period of three years after our last shipment of this product. This offer is valid to anyone in receipt of this information.





ENGLISH



SIMPLE MANUAL

# Wireless Rear Speakers Kit

Please read this manual carefully before operating your set and retain it for future reference.  
To view the instructions of advanced features, visit <http://www.lg.com> and then download Owner's Manual. Some of the content in this manual may differ from your unit.

LG Customer Information Center	
1-800-243-0000	USA, Consumer
1-888-865-3026	USA, Commercial
Register your product Online!	
<a href="http://www.lg.com">www.lg.com</a>	

MODEL  
SPJ4-S



Printed in China

[www.lg.com](http://www.lg.com)  
Copyright © 2018 LG Electronics Inc. All Rights Reserved.

## FCC Compliance Statement

This equipment has been tested and found to comply with the limits for a Class B digital device, pursuant to Part 15 of the FCC Rules. These limits are designed to provide reasonable protection against harmful interference in a residential installation. This equipment generates, uses, and can radiate radio frequency energy and, if not installed and used in accordance with the instructions, may cause harmful interference to radio communications. However, there is no guarantee that interference will not occur in a particular installation. If this equipment does cause harmful interference to radio or television reception, which can be determined by turning the equipment off and on, the user is encouraged to try to correct the interference by one or more of the following measures:

- Reorient or relocate the receiving antenna.
- Increase the separation between the equipment and the receiver.
- Connect the equipment to an outlet on a circuit different from that to which the receiver is connected.
- Consult the dealer or an experienced radio/TV technician for help.

This device complies with part 15 of the FCC Rules. Operation is subject to the following two conditions:

- (1) this device may not cause harmful interference and
  - (2) this device must accept any interference received, including interference that may cause undesired operation.
- Any changes or modifications in construction of this device which are not expressly approved by the party responsible for compliance could void the user's authority to operate the equipment

**FCC RF Radiation Exposure Statement:** This equipment complies with FCC radiation exposure limits set forth for an uncontrolled environment. This transmitter must not be co-located or operating in conjunction with any other antenna or transmitter.

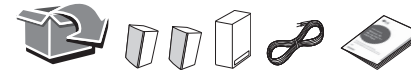
This equipment should be installed and operated with minimum distance 20 cm (7.8 inches) between the antenna and your body. Users must follow the specific operating instructions for satisfying RF exposure compliance.

### FCC Radio Frequency Interference Requirements:

High power radars are allocated as primary users of the 5.25 to 5.35 GHz and 5.65 to 5.85 GHz bands. These radar stations can cause interference with and/or damage this device. This device cannot be co-located with any other transmitter.

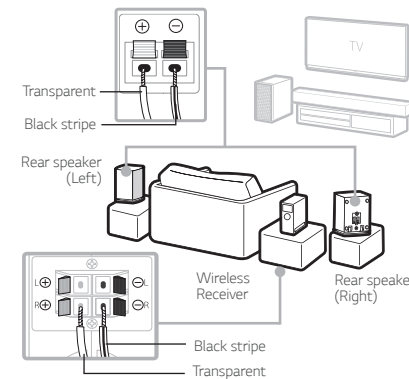
### Responsible Party:

LG Electronics USA, Inc.  
1000 Sylvan Avenue  
Englewood Cliffs, NJ 07632  
Tel: 1-800-243-0000



## 1 Rear Speakers Connection

Speaker design and connection method may be different according to models.



- 1 Connect the speaker cables to rear speakers correctly.
- 2 Connect the Wireless Receiver and the rear speakers (Grey: right, Blue: left) with the speakers cables.
- 3 Turn on the Surround function to enjoy surround sound.

## 2 Wireless Receiver Connection

- 1 Connect the power cord of the wireless receiver to the AC outlet.
- 2 Turn on the unit: The unit and wireless receiver will be **automatically** connected. The receiver's yellow - green LED turns on

### Wireless Receiver Connection Manually

If the rear speakers do not make sound, try to connect manually.

- 1 Press PAIRING button on the rear of the wireless receiver.
  - The yellow - green LED on the wireless receiver blinks quickly.
- 2 Turn on the main unit.
- 3 Pairing is completed.
  - The yellow - green LED on the wireless receiver turns on.

## Surround Sound On/Off

When you turn on surround function, you can enjoy magnificent surround sound for all the input sound source with rear speakers.

The initial setting for the surround function is OFF, turn the surround function ON to use it.

### SJ4R/LASC58R/SJ4Y

Surround On: Press and hold **REAR LEVEL +** button on the remote control about 2 seconds.

Surround Off: Press and hold **REAR LEVEL -** button on the remote control about 2 seconds.

### SJ5Y

Surround On: Press and hold **AUTO VOL** button on the remote control about 2 seconds and then press **AUTO VOL** button repeatedly to select ON - SURROUND in the display window.

Surround Off: Press and hold **AUTO VOL** button on the remote control about 2 seconds and then press **AUTO VOL** button repeatedly to select OFF - SURROUND in the display window.

## Additional Information

### Specification of Wireless receiver

Power requirement	Refer to the main label on the wireless receiver.
Power consumption	Refer to the main label on the wireless receiver.
Dimensions (W x H x D)	Approx. 60 mm x 220 mm x 175 mm (2.36 inch x 8.66 inch x 6.88 inch)

Design and specifications are subject to change without notice.

### About Ferrite Core (Optional)

